

© Whittam Cox Architects - Disclaimer
 This drawing is copyright of WCEC Group Ltd trading as Whittam Cox Architects, and shall not be reproduced nor used for any other purpose without the written permission of the Architects. This drawing must be read in conjunction with all other related drawings and documentation. It is the contractor's responsibility to ensure full compliance with the Building Regulations. Do not scale from this drawing, use figured dimensions only. It is the contractor's responsibility to check and verify all dimensions on site. Any discrepancies to be reported immediately. IF IN DOUBT ASK.
 Materials not in conformity with relevant British or European Standards/Codes of practice or materials known to be deleterious to health & safety must not be used or specified on this project.

All service locations to be confirmed by M&E engineer.

Tenant to restrict waste to within store until collection. No cage external.

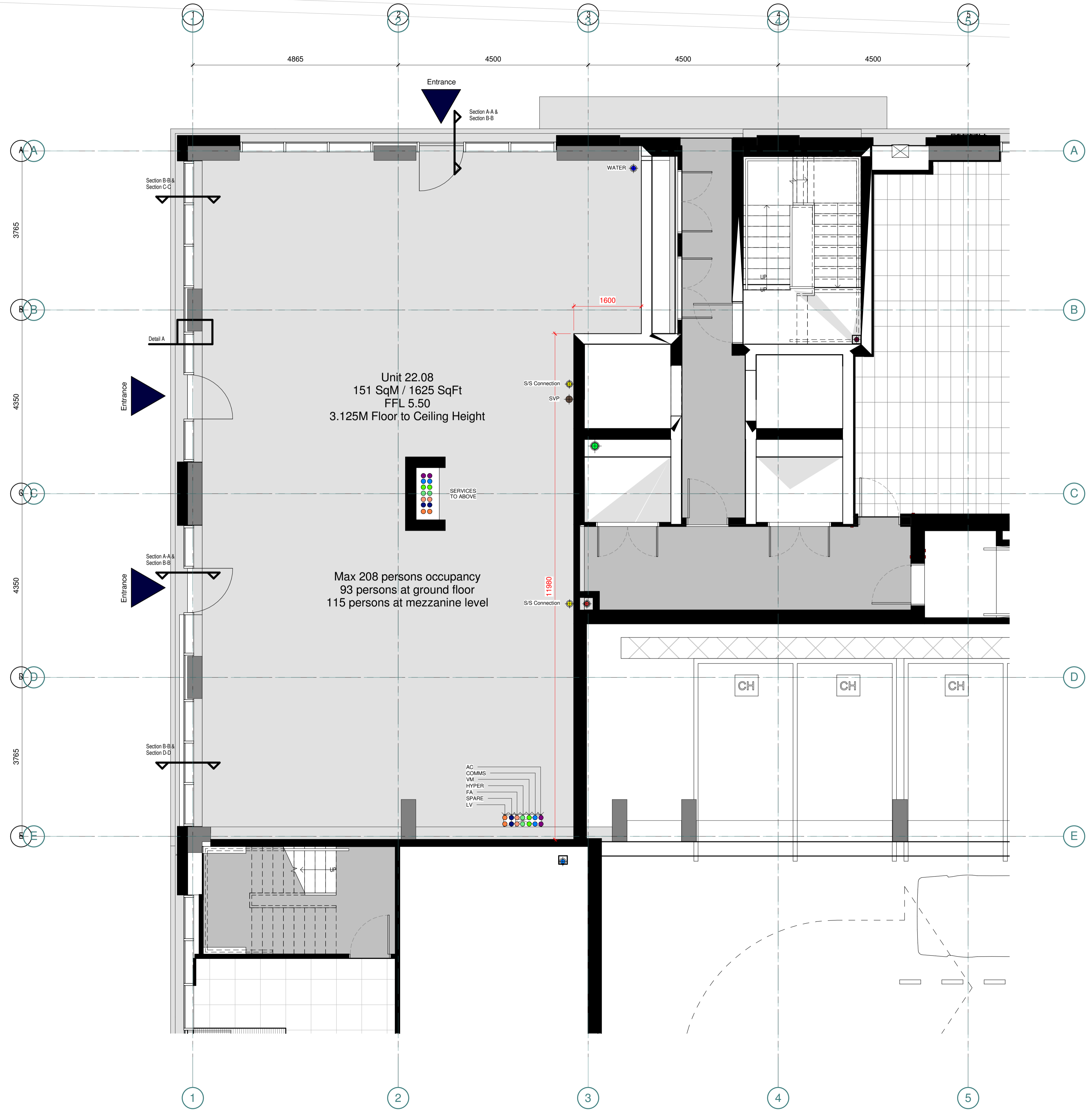
Tenant to issue roof plan details.

Landlord to confirm vent strategy.

Landlord to ensure all service openings through compartment party walls are fire stopped and sealed.

Landlord to ensure opening in locations where riser is over the unit opening to riser to be fire stopped and sealed.

- Key**
- Incoming Electrics
 - 160e RWP from above
 - 160e SVP from above
 - Stub stack drainage connection
 - Incoming mains water supply
 - Incoming gas supply
 - District Heating
 - Incoming TV
 - Incoming BT
 - Incoming FA
 - Internet Hyper optic
 - Structural beams above - reduced headroom
 - Fire Shutter Location
 - Extent of area for seating



Unit 22.08 Plan
1:50

No	Date	Description	By	Ckd
A	19.03.19	Incoming Services updated to suit TCL Drawings. Shopfront colours clarified. Shopfront to Unit 22.02 updated to suit Tenant requirements. Shopfronts to Units 22.01, 22.03, 22.04 & 22.05 revised to co-ordinate.	DRJ	DRJ



PROJECT
Royal Wharf Phase 2B

TITLE
Plot 22.01 - Unit 22.08 Plan

DRAWING STATUS
FOR INFORMATION

DRAWN IW CHECKED CJ

SCALE 1:50 @ A1

DATE MARCH 2017

Whittam Cox ARCHITECTS Formerly WCEC architects
 Chesterfield / 01246 260 261
 London / 02033 880 019
 Leeds / 0113 468 2450
 whittamcox.com

JOB NO.	DRAWING NO.	REV
14-019	A_00_22.01_306	A