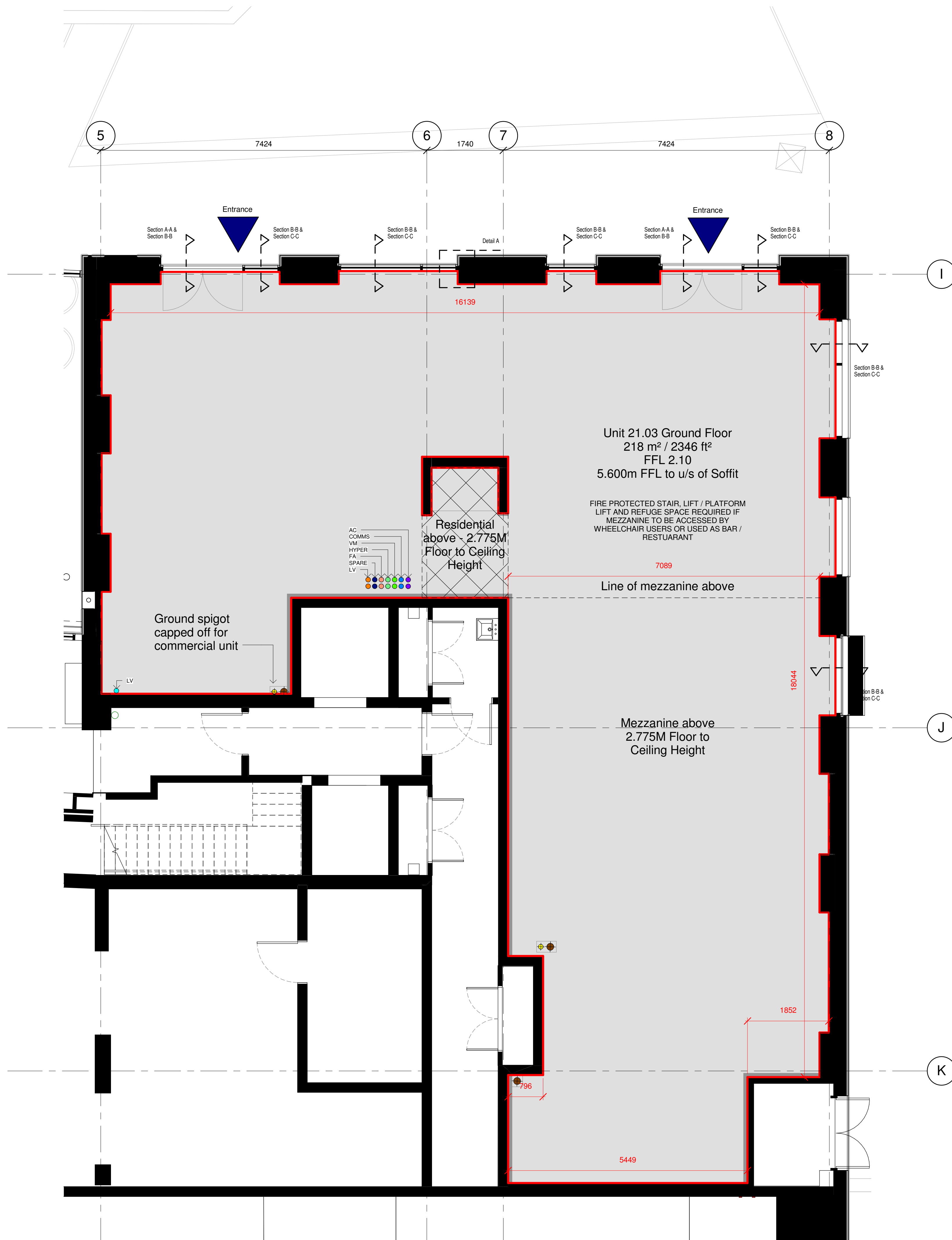


- Notes:
- Tenant to restrict waste to within store until collection. No cage external.
 - Tenant to issue design intent layout for discussion regarding drainage current proposals inadequate.
 - Tenant Riser to have access at each floor level.
 - WCEC to issue Revit model to indicate high level services & routes through tenant demise.
 - Delivery Lay-by within 50m of store entrance

- Key
- Incoming Electrics
 - 160a RWP from above
 - 160a SVP from above
 - Stub stack drainage connection
 - Incoming mains water supply
 - Incoming gas supply
 - District Heating
 - Incoming TV
 - Incoming BT
 - Incoming FA
 - Internet Hyper optic
 - Structural beams above - reduced headroom



| No | Date | Description | By | Ckd |
|----|----------|---|-----|-----|
| A | 21.03.19 | Incoming services updated in line with TCL design information | DRJ | DRJ |



PROJECT
 Royal Wharf Phase 2B

TITLE
 Plot 21.01 - Unit 21.03 Plan

DRAWING STATUS
 FOR INFORMATION

| DRAWN | IW | CHECKED | CJ |
|-------|-------------|---------|----|
| SCALE | 1 : 50 @ A1 | | |
| DATE | MARCH 2017 | | |

Whittam Cox ARCHITECTS
 Formerly WCEC architects
 whittamcox.com
 Chesterfield / 01246 260 261
 London / 02033 880 019
 Leeds / 0113 468 2450

| JOB NO. | DRAWING NO. | REV |
|---------|----------------|-----|
| 14-019 | A_00_21.01_302 | A |