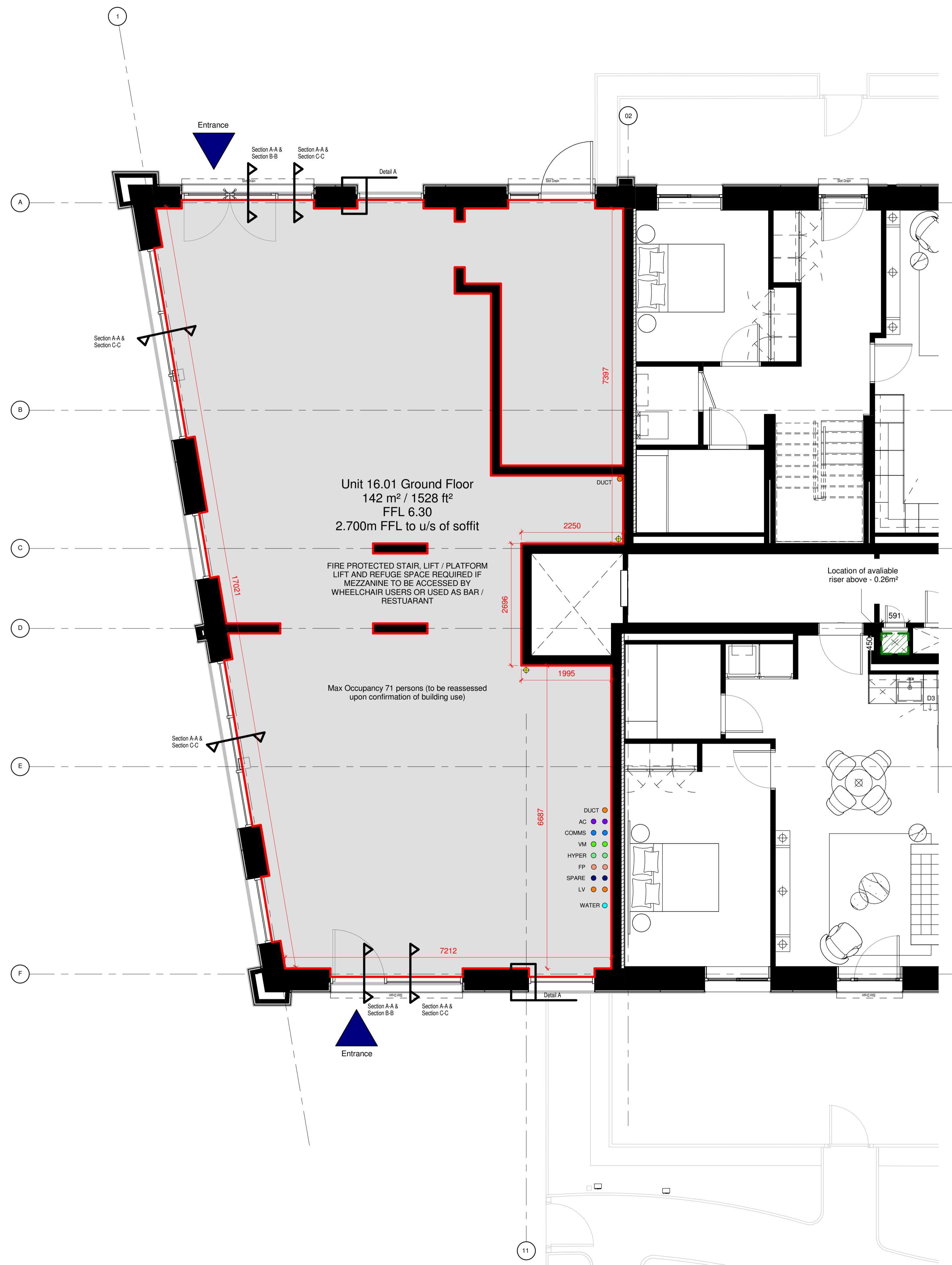


© Whittam Cox Architects - Disclaimer  
 This drawing is copyright of WCEC Group Ltd trading as Whittam Cox Architects, and shall not be reproduced nor used for any other purpose without the written permission of the Architects. This drawing must be read in conjunction with all other related drawings and documentation. It is the contractor's responsibility to ensure full compliance with the Building Regulations. Do not scale from this drawing, use figured dimensions only. It is the contractor's responsibility to check and verify all dimensions on site. Any discrepancies to be reported immediately. IF IN DOUBT ASK.  
 Materials not in conformity with relevant British or European Standards/Codes of practice or materials known to be deleterious to health & safety must not be used or specified on this project.

- Notes:
- Tenant to restrict waste to within store until collection. No cage external.
  - Tenant to issue design intent layout for discussion regarding drainage current proposals inadequate.
  - Tenant Riser to have access at each floor level.
  - WCA to issue Revit model to indicate high level services & routes through tenant demise.
  - Delivery Lay-by within 50m of store entrance

- Key
- Incoming Electrics
  - Water
  - Drainage pop-up
  - BT
  - TV
  - FA
  - District Heating
  - Hyperoptic Fibre Cable
  - Fire Alarm
  - 160s RWP from above
  - 160s SVP from above



No	Date	Description	By	Ckd
RD1	21.03.19	Incoming Services updated in line with TCL Design Information	DRJ	DRJ



PROJECT  
 Royal Wharf, Development Phase 2B

TITLE  
 Plot 16.01 - Unit 16.01 Plan

DRAWING STATUS  
 FOR INFORMATION

DRAWN	IW	CHECKED	CJ
SCALE	1 : 50 @ A1		
DATE	MARCH 2017		

Whittam Cox ARCHITECTS Formerly WCEC architects  
 Chesterfield / 01246 260 261  
 London / 02033 880 019  
 Leeds / 0113 468 2450  
 whittamcox.com

JOB NO.	DRAWING NO.	REV
14-019	A_00_16.01_300	RD1