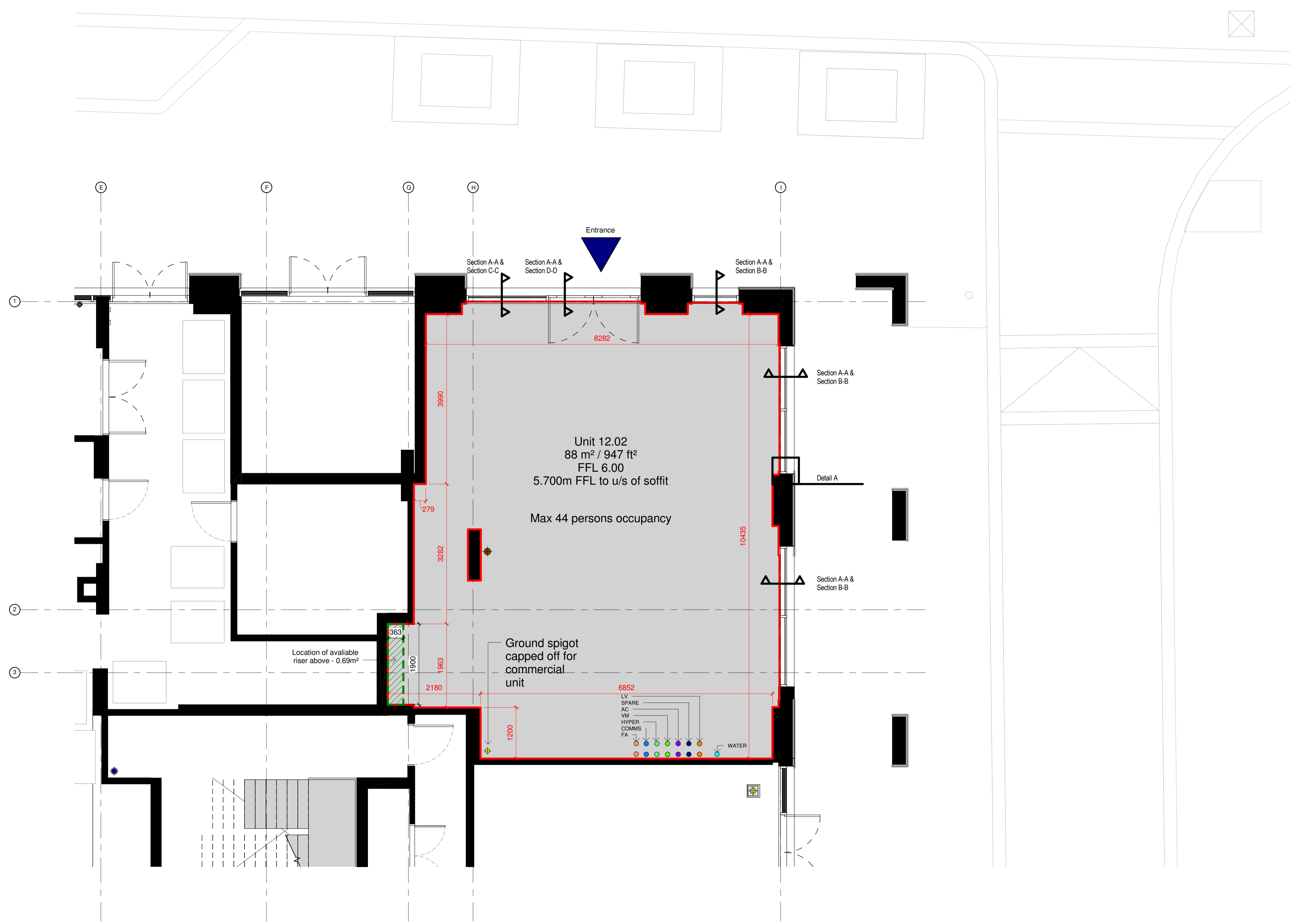


- Notes:
- Tenant to restrict waste to within store until collection. No cage external.
 - Tenant to issue design intent layout for discussion regarding drainage current proposals inadequate.
 - Tenant Riser to have access at each floor level.
 - WCEC to issue Revit model to indicate high level services & routes through tenant demise.
 - Delivery Lay-by within 50m of store entrance

- Key
- Incoming Electrics
 - Gas
 - Water
 - Drainage pop-up
 - BT
 - TV
 - FA
 - District Heating
 - Hyperoptic Fibre Cable
 - Fire Alarm
 - 160a RWP from above
 - 160a SVP from above



No	Date	Description	By	Ckd
A	21.03.19	Updated to co-ordinate with TCL Incoming services design.	DRJ	DRJ



PROJECT
 ROYAL WHARF, DEVELOPMENT PHASE 2B

TITLE
 Plot 12.01 - Unit 12.02 Plan

DRAWING STATUS
 FOR INFORMATION

DRAWN	IW	CHECKED	CJ
SCALE	1 : 50 @ A1		
DATE	MARCH 2017		

Whittam Cox ARCHITECTS
 Formerly WCEC architects
 whittamcox.com

Chesterfield / 01246 260 261
 London / 02033 880 019
 Leeds / 0113 468 2450

JOB NO.	DRAWING NO.	REV
14-019	A_00_12.01_301	A