

Block Location Plan

- High level containment route
- Gas
- Water
- Drainage pop-up
- Elec
- BT
- TV
- FA Panel
- District Heating
- SVP - No connection point
- SVP - Dedicated connection point above ground
- RWP
- Gully

All service locations to be confirmed by M&E engineer.

Tenant to restrict waste to within store until collection. No cage external.

Tenant to issue roof plan details.

Landlord to confirm vent strategy

Landlord to ensure all service openings through compartment party walls are fire stopped and sealed

Landlord to ensure opening in locations where riser is over the unit opening to riser to be fire stopped and sealed

Note:
 Below ground drainage provision to be agreed and provided by the landlord

C	06.02.19	Drainage updated in line with PB&C comments received 05.02.19	DRJ	DRJ
B	05.02.19	Drainage updated following receipt of PB & C mark up received dated 30.01.19	DRJ	DRJ
A	12.12.18	Extent of External Seating Area increased.	DJ	DJ
No	Date	Description	By	Ckd



PROJECT
 Plot 04.01 - Royal Wharf Development Phase 1

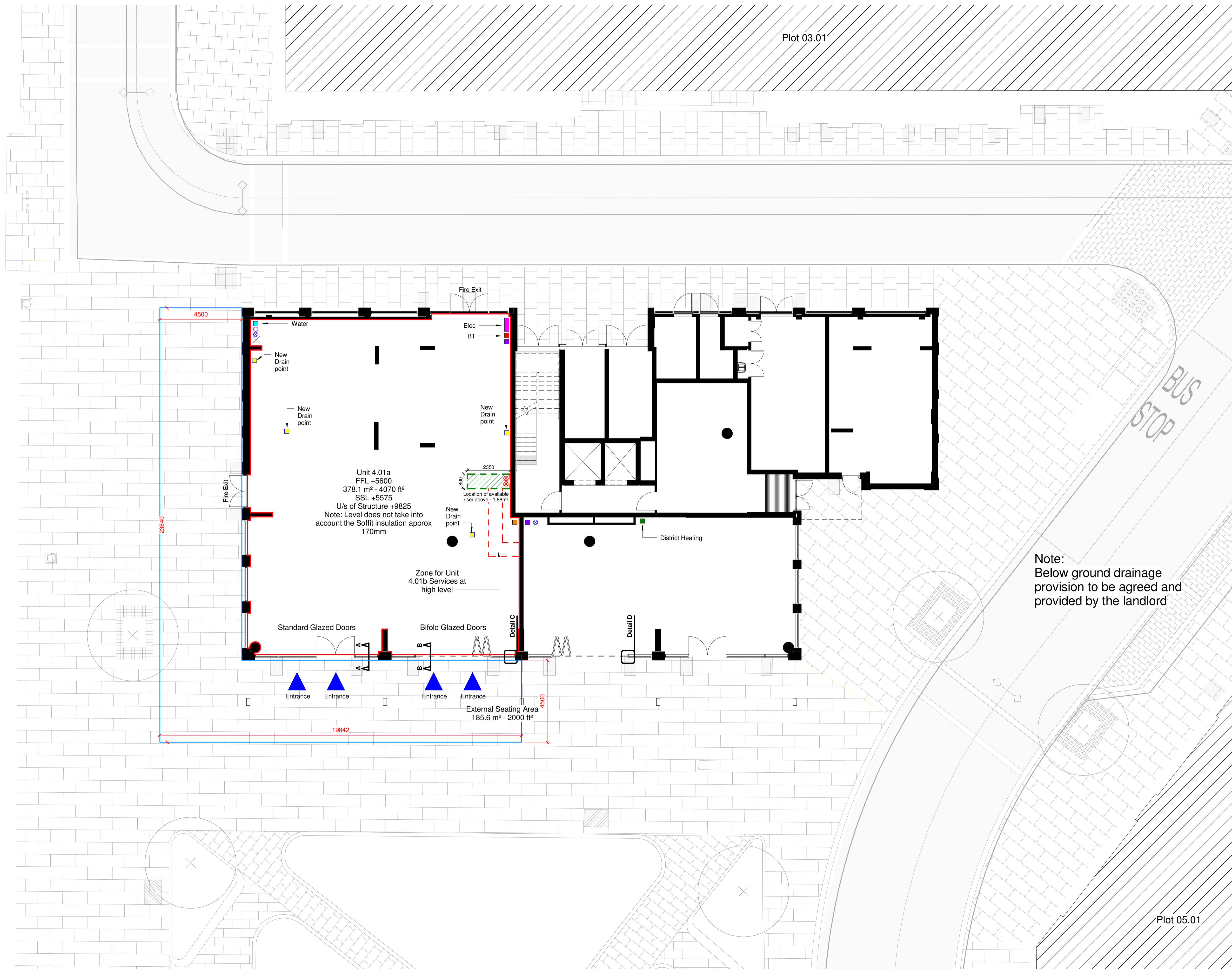
TITLE
 Plot 04.01 - Commercial Unit 4.01a Plan

DRAWING STATUS
 FOR INFORMATION

DRAWN	JS	CHECKED	DRJ
SCALE	As indicated @ A1		
DATE	17.10.18		

Whittam Cox ARCHITECTS
 Formerly WCEC architects
 Chesterfield / 01246 260 261
 London / 02033 880 019
 Leeds / 0113 468 2450
 whittamcox.com

JOB NO.	DRAWING NO.	REV
13-500	A_00_04.01_300.1	C



Plot 03.01

Plot 05.01